

# Clean Power Alliance La Canada Flintridge Townhall

January 23, 2024



# Agenda

- ⚡ What is Community Choice Aggregation?
- ⚡ Overview of CPA
- ⚡ Rates
- ⚡ Rooftop Solar
- ⚡ Tentative Launch timeline
- ⚡ Customer support and resources
- ⚡ Questions



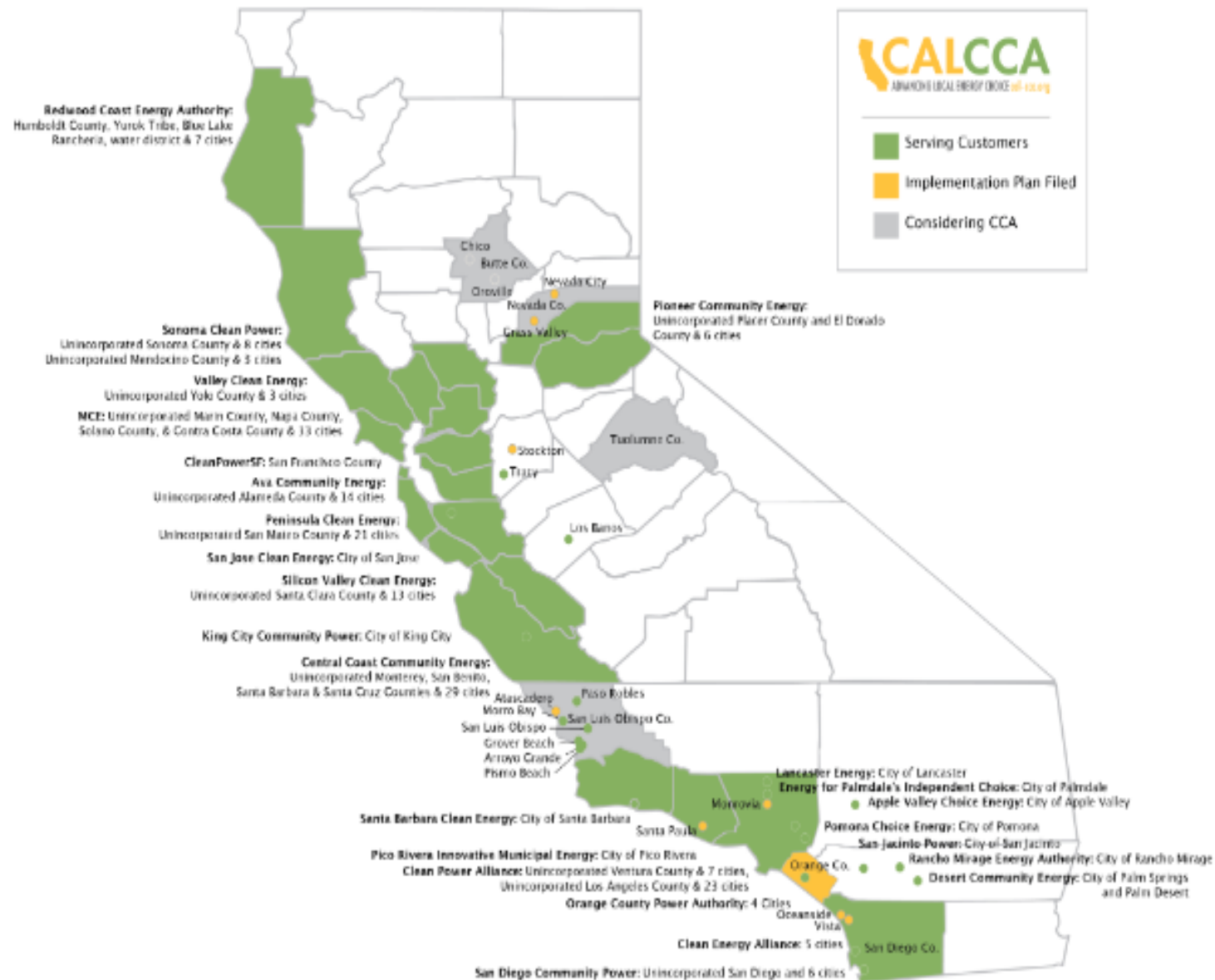
# What is Community Choice Aggregation

# Community Choice Energy

Community Choice Aggregators serve a growing share of customers across the state

- ⚡ Enabled by state legislation in 2002
- ⚡ Currently 25 entities, serving ~ 1/3 of electricity load in CA, most are JPAs
- ⚡ Provide consumer choice, competition, innovation, local control and investment, and tools for climate action and resilience
- ⚡ CCAs have driven almost 14,000 MW of new-build clean energy development in CA
- ⚡ Goals and values differ by CCA

Community Choice Aggregation in California



# Overview of CPA

**We believe in a clean energy future that is local, where communities are empowered, and customers are given a choice about the source of their energy**



# About Clean Power Alliance

- ⚡ CPA serves approximately 1 million customer accounts, representing over 3 million customers and businesses
- ⚡ 32 member jurisdictions in Los Angeles & Ventura counties – 3 new members in 2024
- ⚡ Each member has a seat on Board of Directors – One member, one vote
- ⚡ Largest CCA in CA; more customers on 100% renewable energy rates than any utility in the nation
- ⚡ Revenues, after costs for power and operations plus financial reserve contribution, are pooled and invested into local programs and procurement



# Clean Power Alliance is a publicly-owned electricity provider serving customers clean energy at competitive rates

- ⚡ Clean Power Alliance purchases clean power and Southern California Edison delivers it.
- ⚡ SCE sends a single monthly bill, which includes SCE charges for electricity delivery and CPA charges for electricity supply/generation.
- ⚡ Customers automatically enrolled at preferred energy option by jurisdiction, but can change or opt-out at any time.
- ⚡ CPA charges are NOT an added fee; they simply replace the SCE supply/generation charges on the bill.

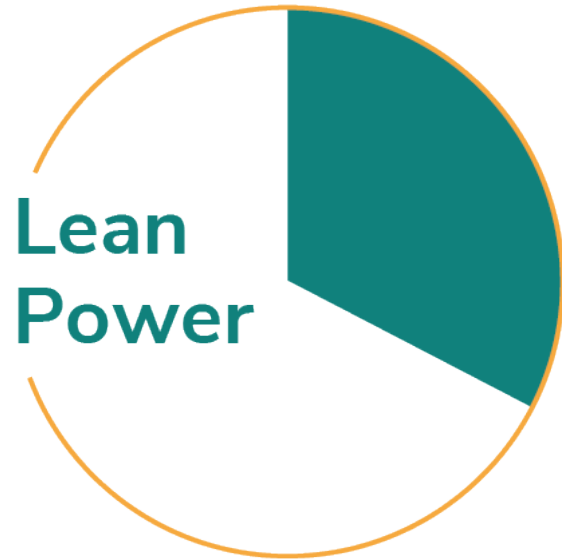
**We work together to bring you access to the most sustainable energy available**





# Rates

# Three Rate Options



- Provides 40% clean energy content at the lowest cost option. (generally, about 1% - 2% discount to SCE's base rate)



- Provides 50% renewable energy content. (generally, at parity with SCE's base rate)



- Provides 100% renewable energy content, mostly from projects within California. (generally, at a 3% premium to SCE's base rate)

Customers always have the option to opt-out and stay/return to SCE for generation/supply



# Rate Comparisons

Energy Product	SCE Base (~35% renewable)	Lean Power	Clean Power	100% Green Power
Average Residential Monthly Bill (Jan 2024)	\$208	\$204	\$206	\$214
Comparison to SCE		-2.0%	-1.0%	3.0%

Average monthly usage  
569 kWh

Energy Product	SCE Base (~35% renewable)	Lean Power	Clean Power	100% Green Power
Average Small Business Monthly Bill (Jan 2024)	\$291	\$286	\$289	\$300
Comparison to SCE		-2.0%	-1.0%	3.0%

Average monthly usage  
977 kWh



# Current Preferred Energy Options in CPA Territory



4 Communities  
82,180 Customers  
91.8% Participation Rate

- ⚡ Arcadia
- ⚡ Simi Valley
- ⚡ Temple City
- ⚡ Westlake Village



6 Communities  
128,254 Customers  
94.3% Participation Rate

- ⚡ Carson
- ⚡ Downey
- ⚡ Hawaiian Gardens
- ⚡ Moorpark
- ⚡ Paramount
- ⚡ Whittier



25 Communities\*  
795,856 Customers  
93.2% Participation Rate

- |                      |                         |
|----------------------|-------------------------|
| ⚡ Agoura Hills       | ⚡ Ojai                  |
| ⚡ Alhambra           | ⚡ Oxnard                |
| ⚡ Beverly Hills      | ⚡ Redondo Beach         |
| ⚡ Calabasas          | ⚡ Rolling Hills Estates |
| ⚡ Camarillo          | ⚡ Santa Monica          |
| ⚡ Claremont          | ⚡ Santa Paula           |
| ⚡ Culver City        | ⚡ Sierra Madre          |
| ⚡ Hawthorne          | ⚡ South Pasadena        |
| ⚡ Hermosa Beach      | ⚡ Thousand Oaks         |
| ⚡ Los Angeles County | ⚡ Ventura County        |
| ⚡ Malibu             | ⚡ Ventura               |
| ⚡ Manhattan Beach    | ⚡ West Hollywood        |
| ⚡ Monrovia           |                         |

Default change to 100% Green scheduled for October 2024 (111,500 low-income customers)

Low-income customers in 100% Green default communities receive 100% renewable energy at the Clean Power rate

\* Includes member agencies joining in March 2024

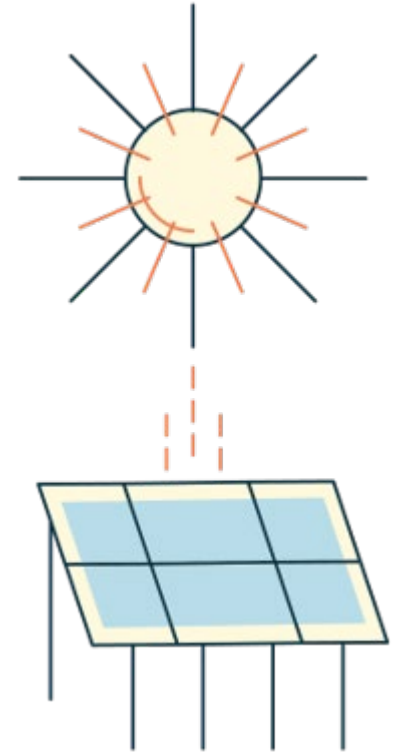


# Rooftop Solar

# Rooftop Solar

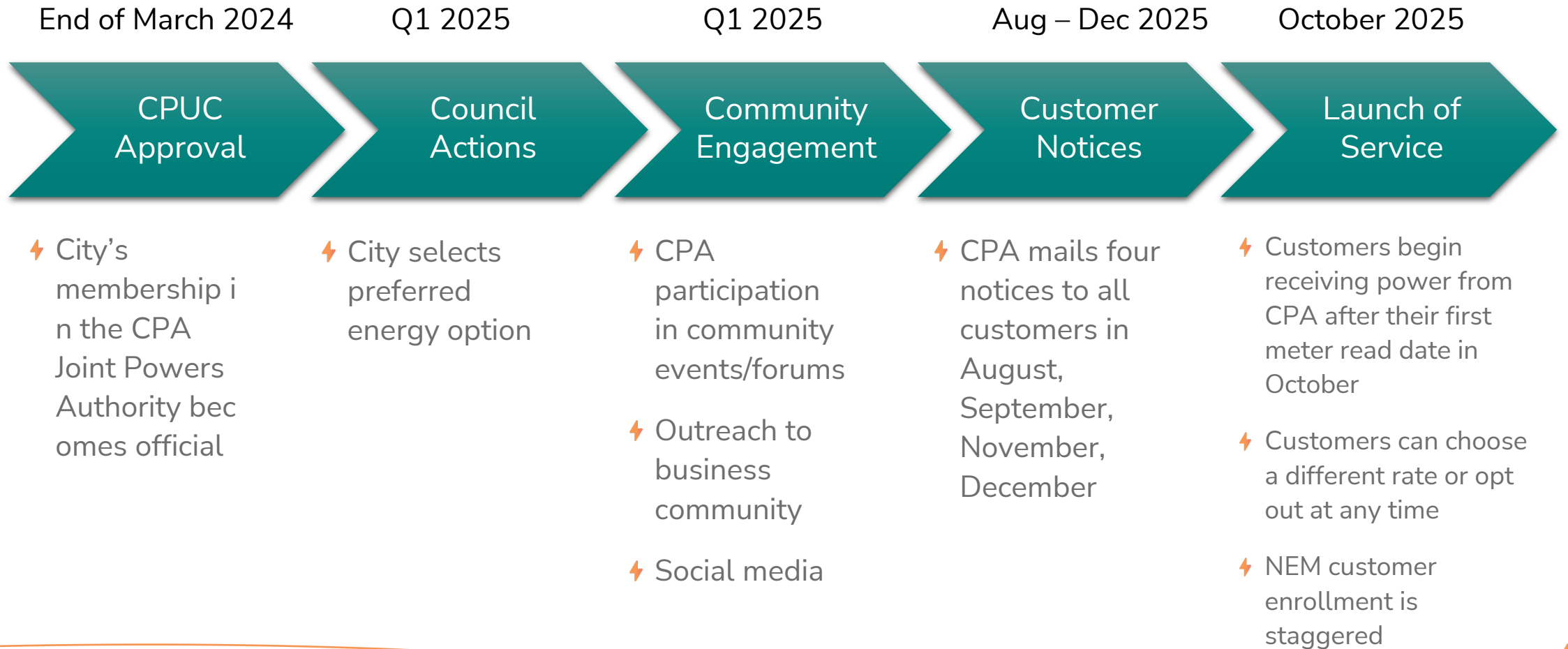
## Net Energy Metering (NEM)

- Clean Power Alliance customers with rooftop solar panels or other generating systems can receive bill credits that offset energy charges and get cash back when they generate more power than they use in a year.
- If you have solar panels at your home or business that were approved by SCE on or before April 14, 2023, nothing changes. You will retain your legacy status and will be enrolled in CPA's and SCE's Net Energy Metering (NEM) programs for the duration of your 20-year legacy period.
- Clean Power Alliance calculates and applies NEM credits on the generation portion of your bill.
- SCE calculates and applies NEM credits on the delivery side of your bill.
- There are a few small differences between how Clean Power Alliance and SCE administer the NEM program.



# Launch Timeline

# CPA Tentative Launch Timeline





# Customer Support and Resources

# Customer Resources

- ⚡ [Bill Comparison Calculator](#) – Compare your energy options and choose the plan that fits you
- ⚡ [Understanding Your Bill](#) – Learn about key features of your electricity bill, including energy usage and generation and delivery charges
- ⚡ [SCE and CPA Joint Rate Comparison](#) – Current prices and average monthly bills for all CPA and SCE rate schedules
- ⚡ [Frequently Asked Questions](#) – Answers to many of the questions commonly asked by new Clean Power Alliance customers
- ⚡ [Customer Programs](#) – Save money, earn incentives, and reduce greenhouse gas emissions by taking advantage of CPA's residential and commercial program offerings
- ⚡ [Help Paying Your Bill](#) – CPA participates in many programs that help our customers access clean and affordable energy

The screenshot shows the CPA Clean Power Alliance website's Bill Comparison Calculator. The service location is set to Manhattan Beach. A large green circle highlights the '100% Green Power' option. Below this, a table compares the rates for different options against the SCE Default Rate. A note at the bottom states that the comparison uses current rates and that rates are subject to change. A link is provided for more information or to change the rate option.

Option	Rate
Lean Power	\$170.56
Clean Power	\$172.29
100% Green Power	\$177.48
SCE Default Rate	\$202.18

**Note:** This comparison uses rates currently in effect for Clean Power Alliance and SCE. Rates are subject to change.

For more information or to change your rate option at any time go to: <https://cleanpoweralliance.org/rate-options/> or call toll-free at 888-585-3788.



# Questions